



## Right Angle Tactile Switches Series SPJ



PAT. I341543  
PAT. ZL 2007 2 0306718.9

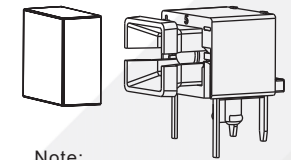
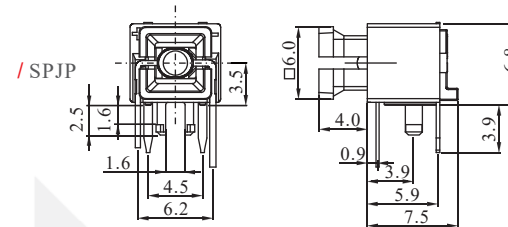
### General Specifications

Switch circuit :SPST  
 Switch contact rating :50mA @ 12V DC max  
 LED rating :Limited forward current(IF) at 20mA max  
 Dielectric Withstanding Voltage :250VAC for 1 minute  
 Contact Resistance :100m Ohm Max.(initial)  
 Insulation Resistance :100M Ohm Min.  
 Operating Force :200gf±50gf  
 Total Travel :0.3mm±0.1mm  
 Mechanical Life :1,000,000 cycles Min.  
 Operating Temperature :-10 °C ~ +60 °C

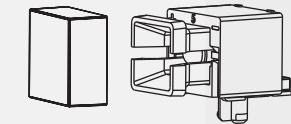
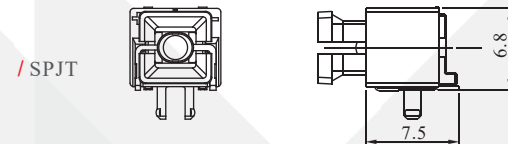
### Materials

Cap :Polycarbonate (PC)  
 Base :Polyamide (PA)  
 Reflector :Polyamide (PA)  
 Switch Terminal :Brass with gold plating  
 Action Dome :Stainless steel with silver plating  
 Sealing rubber :Silicone

### Dimension

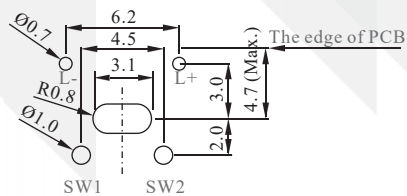
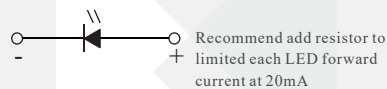


Note:  
\*Fit cap **AFTER** soldering process.

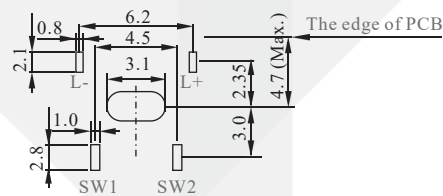


Note:  
\*Fit cap **AFTER** soldering process.

### PCB layout & Circuit Diagram

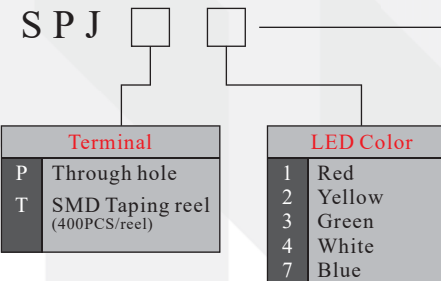


/ Through hole type - SPJP



/ SMD type - SPJT

### How to Order



EXAMPLE:  
SPJPIYCA044TD  
From Page 33



**6**  
Page 36

**9**  
Page 52

**12**  
Page 52

**9**  
Page 42

**12**  
Page 49